

# ***THE PIT'BUTLER***

## **Instruction/Building:**

The package will include the following parts:

1 Handlebar - 1 Start box bracket - 1 Plate bracket - 2 Polycarbonate plates - 4 Plate stags  
12 screws 4x12mm - 4 screws 4x16mm - 2 Adjustment screws - 1 Drill decal template.



1. Check the package to see that all parts are there.
2. Begin by dismantling your start box in the area where you need to drill the holes for the start box mount. The start box mount should be placed in the middle of the start box, but if it cannot because of the internal parts of the start box it is ok to move it a few mm left or right or up and down. But it is important that you make sure that there is room in the area you have chosen. Also be aware of what side of the start box you drill.  
Once you have decided where the mount should be placed, you place the adhesive drill template decal and drill thru the 4 marked holes on the template with a 4,5mm drill. (to be precise start with a smaller drill 2-3mm) Then mount the bracket with 4 4x12mm screws.



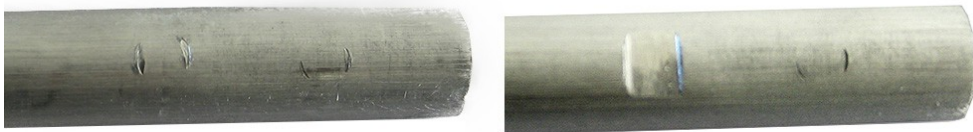
3. Now take the 2 plates and mount the 4 plate stags with the 8 4x12mm screws. But do not tighten them too hard for now. Take the plate bracket and place it in between the plates with the 4 4x16mm screws. Put the handlebar thru to see if it slides freely. Then tighten all the screws. You can use Loctite on the screws for added security.



4. Mount the handlebar in the plate bracket and down thru the start box bracket and tighten both finger screws. Make sure that the handlebar goes thru all the way to the table, as it is used as the fifth leg on the start box. If not the start box might tip over when loaded with fuel and tools.



5. Safety tip. When all is mounted in the correct position, then tighten the lower finger screw a little more, then loosen both finger screws and pull out the handlebar. Find the mark that the lower adjustment screw made on the handlebar, and use a file to make a slot across the handlebar. If the lower adjustment screw for some reason should come lose you don't drop the start box and car. And as said earlier feel free to use Loctite on all screws.





If anything against expectation is not as it should be, please contact us at [order@pitbutler.dk](mailto:order@pitbutler.dk), so we can remedy the problem whether it is damage or defects on the undisclosed material.

# ***THE PIT'BUTLER***

Best regards.  
Henrik Rathje

[www.pitbutler.dk](http://www.pitbutler.dk)